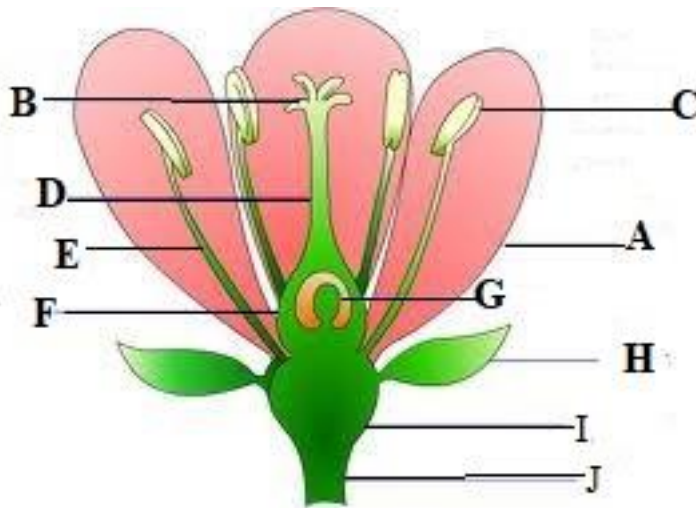


1. The structure below is a plant organ. Study it and answer the questions that follow;



(a) Name the organ of the plant (1 mark)

(b) Give the function of the organ to the plant (1 mark)

(c) Name the parts labelled (10 marks)

- A.....
- B.....
- C.....
- D.....
- E.....
- F.....
- G.....
- H.....
- I.....

J.....

(d) Give the functions of the parts labelled (4 marks)

A.....

C.....

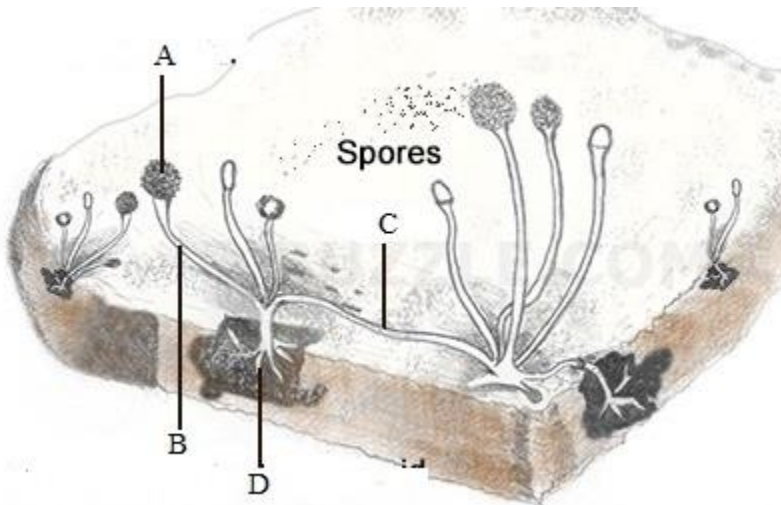
H.....

J.....

(e) How are insect pollinated flowers adapted for pollination?(5mks)

.....  
.....  
.....  
.....  
.....  
.....  
.....

2. Study the figure below and answer the questions that follow.



(a) Name the organism shown (1 mark)

.....

(b) Name the parts labelled (4 marks)

A.....

B.....

C.....

D.....

(c) State the functions of the parts labelled

A.....

.....

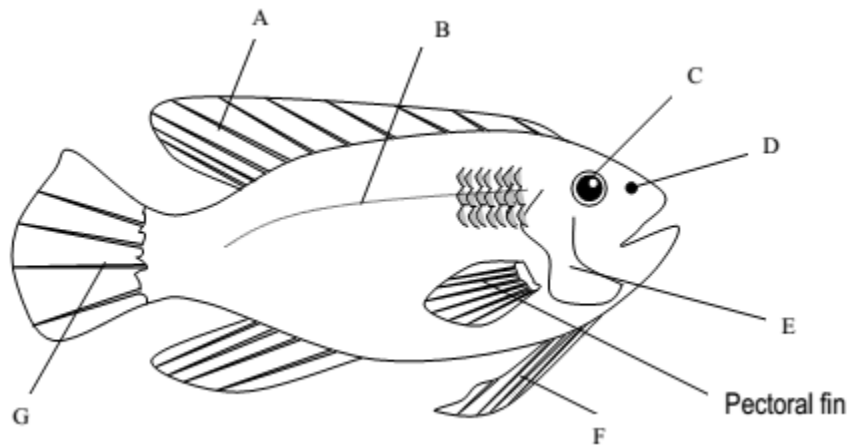
C.....

.....

D.....

.....

3. The figure below is of an aquatic organism, use it to answer questions that follow.



a) Classify the organism according to:

Kingdom:.....

Phylum:.....

Class:.....

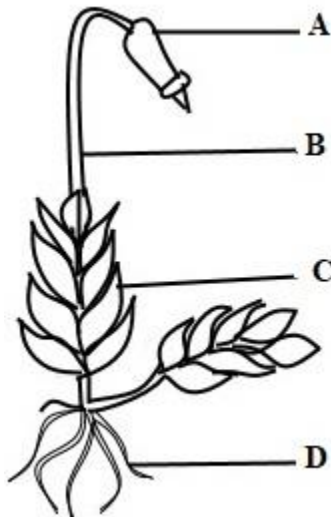
b. Name the parts labelled:

- A: .....
- B: .....
- E: .....
- F: .....
- G: .....

C.. Using *observable features* only, state how the organism in the figure above is adapted to its mode of life.

- i) .....
- ii) .....
- iii) .....

4. The diagram below is that of a moss plant



(a) Name the parts labelled (4 marks)

- A.....
- B.....
- C.....

D.....

(b) Identify the division to which the plant belongs to (1 mark)

.....

(c) Give reasons for your answer above (2 marks)

.....  
.....  
.....  
.....

5. A student was given the following animals

Animal P – has eight jointed legs, two body parts , no antennae and no wings.

Animal Q – has six jointed legs, three body parts one pair of antennae and one pair of wings

Animal R – has six jointed legs, three body parts, one pair of antennae and no wings

Animal U– has ten jointed legs, two body parts, two pairs of antennae and no wings

a) Put the information above in table form (8 marks)

b) Construct a dichotomous key to identify the organisms (3 marks)

c) State the phylum and class of each of the animals above belong (4 marks)

Organism	Phylum	Class
P		
Q		
R		
S		